



Gender & Disaster Pod

An initiative of WHGNE, WHIN & MUDRI

Health and Disaster Management for Mothers and their Babies

Dr Debra Parkinson

How gender determines
disaster risk, experience and legacy

Virtual: April 20, 2020

The GAD Pod acknowledges the Traditional Owners of the lands from which we meet.

GAD Pod's research & projects

DHHS
Roadmaps
2015

GAD TASKFORCE
Jan 2014-2017

NDRGS
Lessons in
Disaster
2015-2016

NEMP
GEM
Guidelines
2015-2016

'Just Ask'
Men's
Conference
Oct 2013

'Hidden
Disaster'
Conference
March 2012

RESEARCH
30 Women
47 workers
2009 - 2012

RESEARCH
32 Men
2013

*'But what about the
men?'*
\$\$\$
NDRGS
For men's research

Men's Advisory
Group

RESEARCH
Barriers to
Women in EM
DELWP
2015-2016

Diversity in
Disaster
Conference
NDRGS
April 2018

RESEARCH
LGBTI in EM
DPC
2016-2017
4 Bi women

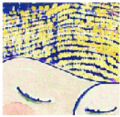
Survey 12
LGBTI
157 EM
30
workshop

RESEARCH L/T
disaster resilience
NDRGS
2017-18
30 Women
26 Men



Gender & Disaster Pod

An initiative of WHGNE, WHIN & MUDRI



Gender & Disaster Pod

An initiative of WHGNE, WHIN & MUDRI

Gender and Emergency Management Guidelines

Gender issues are known to compound the damaging effects of disaster on survivors. Increasing understanding of the relationship between gender and disaster will improve the health and wellbeing of both women and men affected by disaster across Australia.

GEM Guidelines

[Full guidelines \(PDF 1.10MB\)](#)

[GEM Guidelines checklist \(PDF 299KB\)](#)

[Literature review \(PDF 868KB\)](#)

[Peer evaluation report \(All on Board: Evaluation Report; PDF 1.63MB\)](#)

The Gender and Emergency Management (GEM) Guidelines were developed collaboratively as part of

Babes in arms, sooty heroes and men in charge

Checklist

Consider the following:

- has everyone in the household and support network developed the plan together?
- have you developed a back-up plan or contingency options in case you get caught?
- have you included your out-of-town contacts?
- do you know where you will stay if you can't return home?
- have you included important phone numbers?
- have you completed your medical information list?
- have you checked your insurance cover?
- have you developed a household financial plan?
- have you completed your annual check-up?



Protect what matters most





Gender & Disaster Pod

An initiative of WHGNE, WHIN & MUDRI

Myth: 'Women and children first'



OMAF P. 2010. 27. 530. 5



Gender & Disaster Pod
An initiative of WHGNE, WHIN & MUDRI

<https://www.nmni.com/collections/history/1900-1923-home-rule-to-partition/titanic-and-her-sister-ships>

Gender & disaster: Bushfire case study



Gender & Disaster Pod

An initiative of WHGNE, WHIN & MUDRI





Gender & Disaster Pod

An initiative of WHGNE, WHIN & MUDRI

Dep. Commissioner Victoria Police Tim Cartwright

(to 2015)

'As a man standing before you here in uniform, it saddens me to think that one of the greatest challenges of dealing with domestic violence is our own concept of masculinity ... This is about men being men ... in response to disasters. In public we are strong and fearless and not affected, but the implication for many women is when we come home, we don't cope at all. The women ... suffer.'



Gender & Disaster Pod

An initiative of WHGNE, WHIN & MUDRI



disaster is no excuse for family violence

You can help in just 4 steps:

1. **ASK:** Are you safe at home?
2. **NAME IT:** What you've just described to me is violence and it's a crime.
3. **RESPOND:** Give contact details of the local Domestic Violence Service, CASA and Victoria Police.
4. **FOLLOW UP:** 'Last time you spoke about your safety. I'd like to know how you are now.'

www.genderanddisaster.com.au



Gender & Disaster Pod

An initiative of WHGNE, WHIN & MUDRI

Safe Steps – 24 hour support, information or referral to safe accommodation/refuge 9322 3555 or 1800 015 188. (Toll Free for country users) www.safesteps.org.au

CASA – Centres Against Sexual Assault
1800 806 292 (all hours) www.casa.org.au

Victoria Police – 000

1800 RESPECT – Australia-wide confidential information, counselling and support service. Open 24 hours to support people impacted by sexual assault, domestic or family violence and abuse. 1800 737 732
www.1800respect.org.au/inclusive-practice/violence-in-times-of-disaster

Men's Referral Service – 1300 766 491 (Toll free). Mon-Fri: 8am – 9pm, Sat-Sun: 9am - 6pm www.ntv.org.au

(Adapted from 'Raped by a Partner')

'She dances on the wind' by Ona Henderson (03) 9712 0393



Gender & Disaster Pod

An initiative of WHGNE, WHIN & MUDRI



Gender & Disaster Pod

An initiative of WHGNE, WHIN & MUDRI

Community Recovery



Evacuation Planning

Family Violence Framework for Emergency Management



Health and Disaster Management





Gender & Disaster Pod

An initiative of WHGNE, WHIN & MUDRI

[HOME](#)

[ABOUT](#) ▾

[INFO HUB](#) ▾

[THEMES](#) ▾

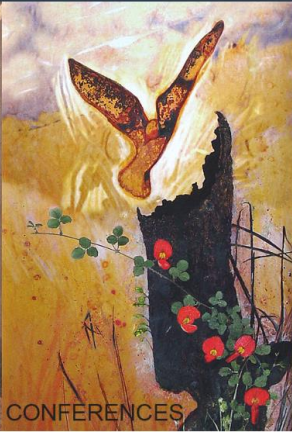
[NEWS](#)

[CONTACT](#)

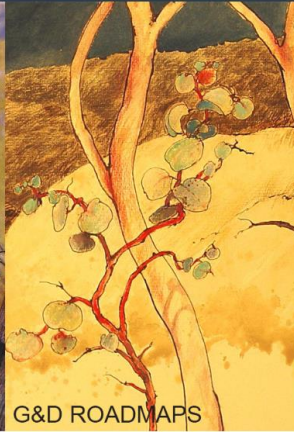
[TRAINING HUB](#) ▾



SEARCH &
RESOURCES



CONFERENCES



G&D ROADMAPS



NATIONAL GEM
GUIDELINES



EDUCATION &
TRAINING

Dr Debra Parkinson
Research Fellow, Monash University
Manager, Gender & Disaster Pod
space@netc.net.au
www.genderanddisaster.com.au