

Welcome: ‘Protecting women’s reproductive rights in policy and resourcing decisions – the need for ‘data and dollars’’

Meeting Chairs

Associate Professor
Julie Smith
Research School of
Population Health,
ANU



Naomi Hull, WBTi
Australia



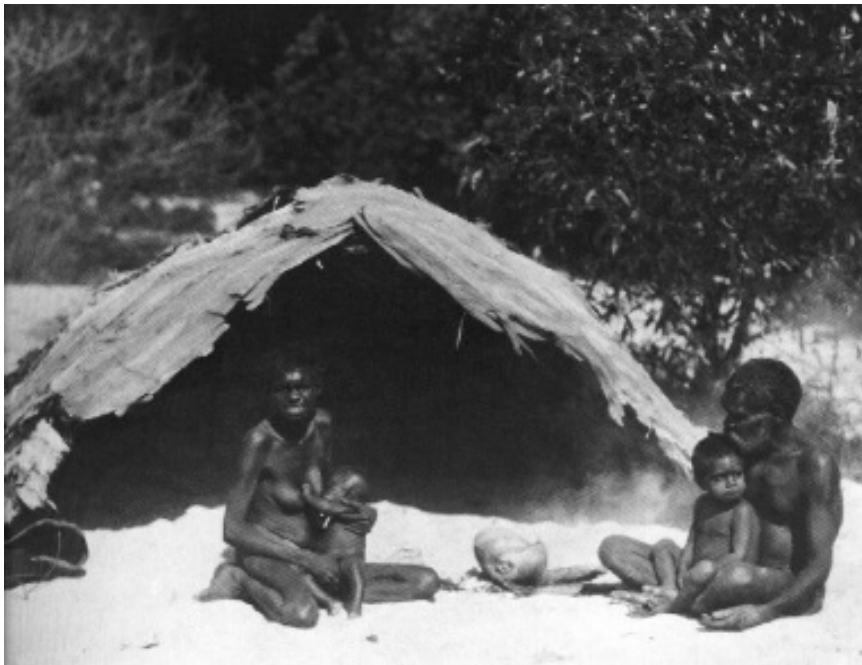
[ANU CRAWFORD SCHOOL NEWS AND EVENTS:
https://taxpolicy.crawford.anu.edu.au/news-
events/events/16383/gender-responsive-budgeting-and-
progressing-breastfeeding-policy-2020-and?#tab](https://taxpolicy.crawford.anu.edu.au/news-events/events/16383/gender-responsive-budgeting-and-progressing-breastfeeding-policy-2020-and?#tab)





‘Protecting women’s reproductive rights ... insisting on ‘data and dollars’

Acknowledgement of country



Thompson, *Children of the Wilderness*



Breastfeeding as a human right, especially in emergencies and pandemics?



Joint statement by the UN Special Rapporteurs on the Right to Food, Right to Health, the Working Group on Discrimination against Women in law and in practice, and the Committee on the Rights of the Child in support of increased efforts to promote, support and protect breast-feeding

States should do more to support and protect breastfeeding, and end inappropriate marketing of breast-milk substitutes

Statement by the UN working Group on discrimination against women and girls*

Responses to the COVID-19 pandemic must not discount women and girls

As governments attempt to tackle the unprecedented public health and economic crises caused by the COVID-19 pandemic, we are deeply concerned that women and girls are suffering even more egregious violations of their human rights. In the absence of gender sensitive intersectional responses, different forms of systemic discrimination already faced by women and girls will be exacerbated. The dramatic increase in women's caregiving responsibilities, the rise in what was already an epidemic of sexual and domestic violence, the continued feminization of poverty, the proliferation of barriers to healthcare, especially pregnancy-related healthcare, will profoundly jeopardize women's safety and well-being, economic security, and participation in political and public life, both during and after the pandemic. The measures taken by governments to mitigate the risks to health and life posed by COVID-19 must take into account the specific attributes and circumstances faced by women and girls. These include, but are not limited to their sex, gender, age, disability, ethnic origin, and immigration or residence status. States must refrain from any action that will exacerbate the already disproportionate economic and social impact of this pandemic on women and girls.

Women are currently at the frontlines, providing essential medical and other services and keeping communities running while lockdowns are enforced. As a result, they face a tremendous increase in their working hours, and are at greater risk of being directly exposed to COVID-19. There are reports of nurses, doctors, midwives, and hospital cleaners contracting the virus while on duty, due to the lack of adequate provision of personal protective equipment. In some countries health workers have been dismissed from their jobs or arrested for complaining about the inadequate means of protection. Others have been evicted by landlords for fear of contagion.

Galtry J. Strengthening the human rights framework to protect breastfeeding: a focus on CEDAW. *International Breastfeeding Journal* 2015;10(1):1.

Jonsson U. Breastfeeding a human rights perspective. The 6th Nordic Breastfeeding Conference. Frösundavik, Sweden; 2015.

Meier BM, Labbok M. From the Bottle to the Grave: Realizing a Human Right to Breastfeeding through Global Health Policy. *Case W. Res. L. Rev.* 2009;60:1073.

Resourcing women, protecting breastfeeding



6:00pm	Introduction of the facilitators and webinar instructions Meeting Chairs: Associate Professor Julie Smith, Research School of Population Health, ANU Meeting Co-Chair: Ms Naomi Hull, WBTAUS Coordinator, RN, IBCLC, MPH, Cert IV Breastfeeding Education
6:05pm	Data, dollars and democratic deficits – prioritising women’s concerns in Australian fiscal decision-making Emeritus Professor Marian Sawer, College of Arts and Social Sciences, ANU
6:25pm	Gender Budgeting for Breastfeeding – Addressing and Prioritising the invisible YCF economy in economic statistics and budget policymaking Honorary Associate Professor Julie Smith
6:45pm	Back to work’: Time for a Survey that accurately counts women’s ‘work’ amidst COVID 19 disruption Professor Lyn Craig, University of Melbourne
7:05pm	Show us the data! Breastfeeding data for policy visibility, implementation, and accountability Professor Lisa Amir, La Trobe University
7:35pm	Questions and answers (facilitated)
7:55pm	Closing remarks
8:00pm	Close

Breastfeeding is worth it, but it is not free ...