

Gender Café
End of Year Celebrations and Prizegiving
Ceremony

November 14, 2018
China in the World Building

Margaret Jolly
ANU Gender Institute Convenor
The Australian National University
margaret.jolly@anu.edu.au

Celebration *and* Critical Reflection



Not really end of year!— hectic period combining marking, selection of graduate students and conference season

Doing research and writing, examining honours students, writing references, the Gender Institute signature event for 2018

Nov 12-13 *Happy Anniversary – Reflecting on Marriage Equality*



Gender Institute Management Committee 2017-2018



Numbers and Engagement

Gender Institute at ANU embraces 199 ANU staff (academic and professional), and 69 graduate students across the several colleges of ANU – HASS and STEM

We have organised *40* events this year and produced 41 newsletters which have gone to 1925 recipients across ANU, Canberra, Australia and overseas , enhanced our website (with podcasts) and our social media presence

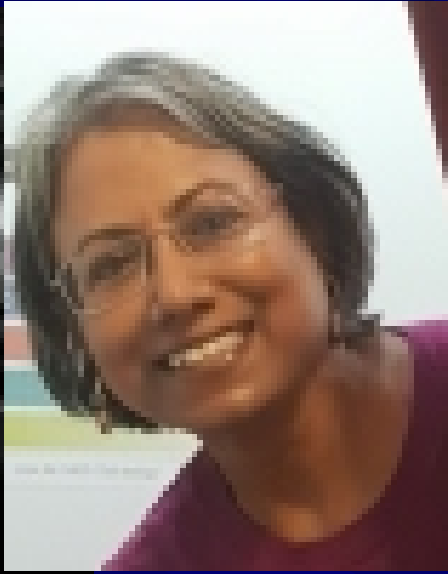
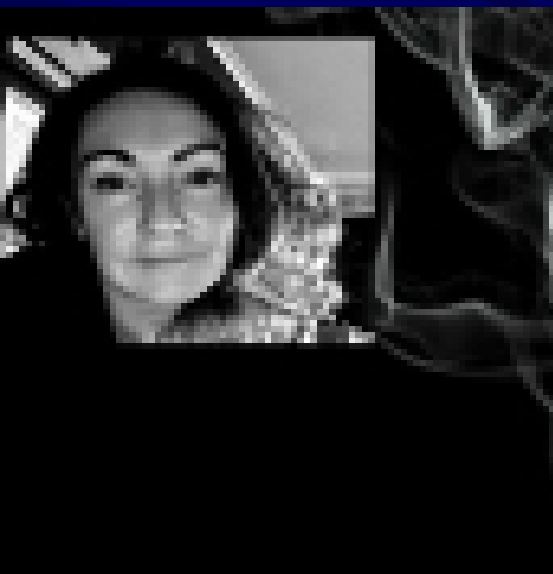
Engagement within ANU – SAGE and Respectful Relationships
ANUSA, PARSA, Family Friendly Committee

External collaborations esp DFAT, ACT government, UN Women, World Bank, NGOs (e.g. WILPF)

Values: New Mission Statement/Strategic Plan

Not just about advancing interests of women but emphasising importance of *inclusivity* (of men, gender diverse and trans people) and of *intersectionality* – Intimate interaction between gender and other axes of identity – race, sexuality, class, religion, ability, age

We have catalysed new events – *Inspiring Women of ANU* public lecture series to celebrate women promoted to Level E in 2017 round and innovative panels and workshops devoted to intersectional issues. e.g *Being an Indigenous Woman* April 2018 and *Transphobia* workshop with Raewyn Connell

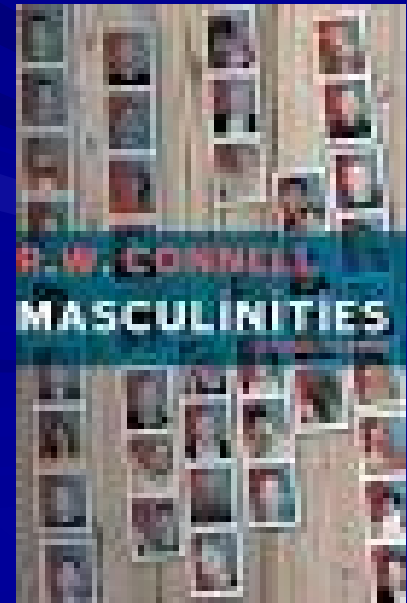


*Inspiring
Women
of ANU*
**Public
Lectures**



Is there Such a Thing as Transphobia?

**Raewyn Connell Masterclass
for HDRs and ECRs May 2018**



Being an Indigenous Woman,
April 2018

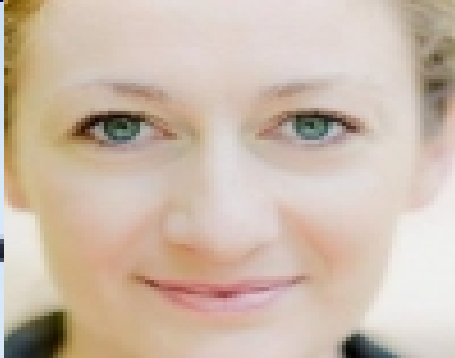
Maeve Powell, Jessa
Metuamate, Celeste Liddle

SAGE Related Events

Women in Science, Child Care and Family Friendly Committee



Sharon Sessler July
Cassidy Sugimoto,
August



Deborah Widdis, May
Why Fathers Care Matters
Lyndall Strazdins ,August



International Collaborations



**Sanam
Naraghi-
Anderlini
International
Civil Society
Action
Network November**



**Sally Engle
Merry NYU
Intersections
and VAW
Indicators
March**



**Caren Grown
Senior Gender
Advisor World
Bank on Gender
and Poverty +
DFAT October**

